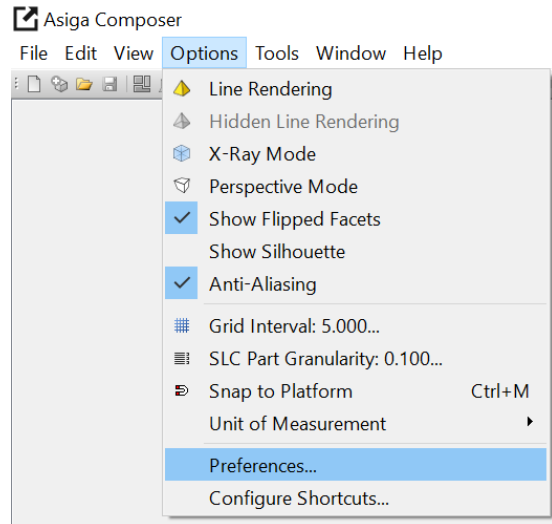



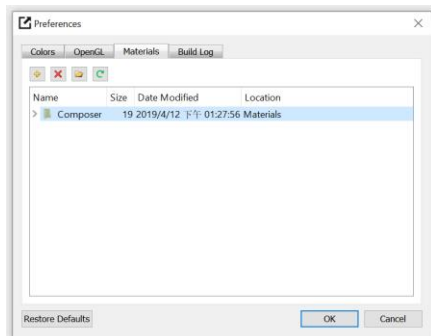
## DLP385-Modeling – Tan (D385M-R001TN) Asiga Max UV385

**Download ini file:** ALW-DLP385-Tan.ini  
<https://www.applylabwork.com/support/>

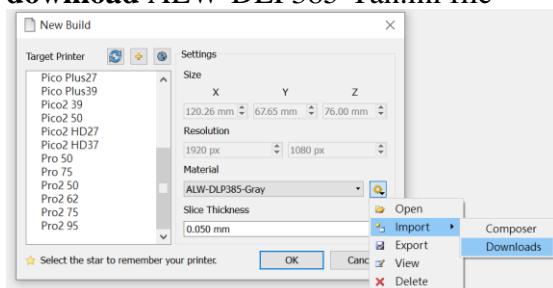
Step 1. Open Composer software, select **Options** from navigation bar and then click **Preferences**.



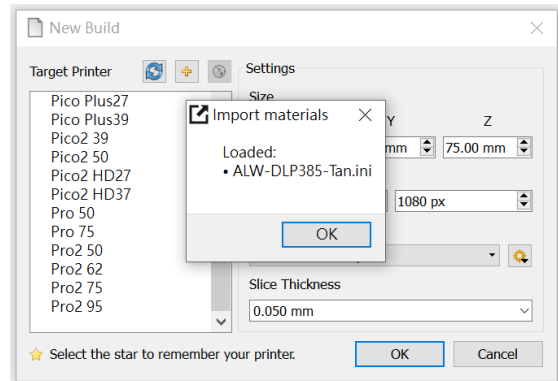
Step 2. Select **Materials** tab and then click  icon, choose the folder where you download our .ini file.



Step 3. Click  icon, select **Import** and click the chosen folder (from Step 2), to **download** ALW-DLP385-Tan.ini file



Step 4. After loading **ALW-DLP385-Tan.ini**, a dialog box will pop up to confirm the ini file is loaded.



### Ready to Print:

Choose **ALW-DLP385-Tan** from **Materials** drop-down menu, and choose appropriate layer thickness for your model [high layer thickness reduces printing time but decreases print quality]

Load 3D model and double check support and orientation are optimal before print.

### Washing

Submerge print in clean IPA bath for **5 minutes**, blow off excess IPA, set print in a shaded airy place to dry before curing.

### Curing

**Asiga Flash 10-30 minutes**

Optimal rigidity can be achieved with 30 minutes, reduced curing time will provide more material flexibility.

### Storage and Handling

Don't leave resin in the tray for prolong period of time without printing. Filter resin in case of fail prints.

Note:

(1) This resin is formulated on **Asiga Max UV385**.

(2) Slight pigment settlement is normal. Gently mix remaining resin in resin tray with **rubber spatula** for color evenness.