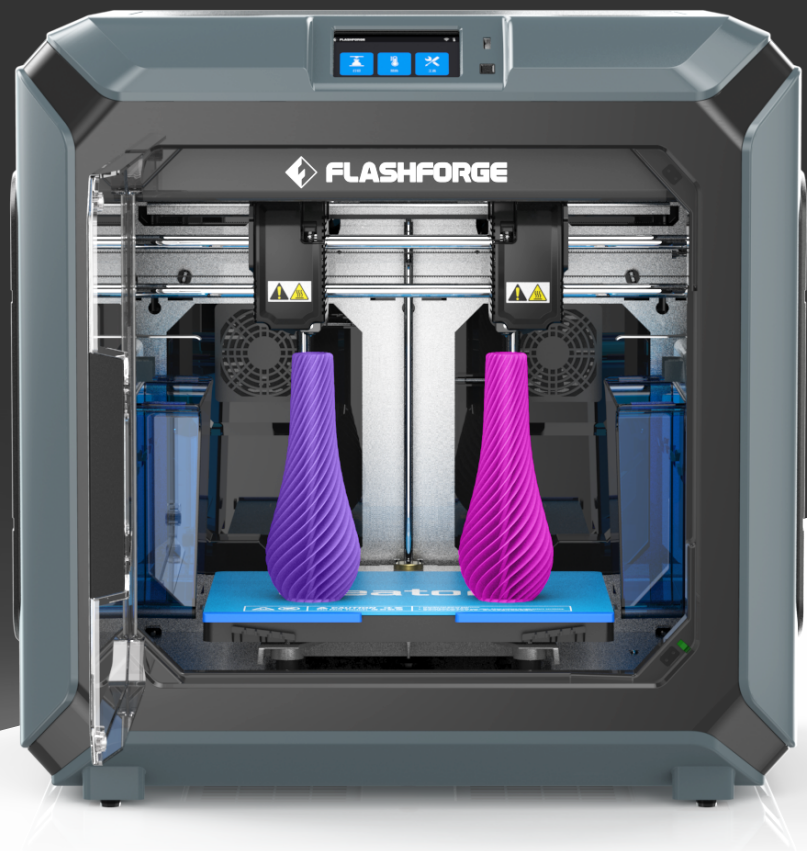




Creator 3

Advanced independent dual-extruder system



Creator 3 Desktop Professional 3D Printer

Creator 3 is a creative independent dual-extruder 3D printer, designed to print complex shapes with soluble filament support to get better details. The independent dual nozzles can also print two identical parts at the same time, it runs at twice the efficiency for small-scale production. Creator 3 uses stainless steel nozzles that are compatible with PLA, ABS, carbon fiber composite, nylon and PC.

Excellent product interaction design and the integration of software, hardware and cloud platforms, Creator 3 provides the possibility of remote collaboration operations to better meet modern office requirements.

Creator 3 meets the efficiency of prototype development and design and the economics of direct application, and can be widely used in automotive, art design, product design and other applications.

Heatable flexible platform to 120°C

Residue scraping

Auto-calibration in Z-axis

Multi-printing mode

Independent dual-extruder

Multi connectivity: Wi-Fi, Ethernet

Built-in camera

Filament detector

Air filter

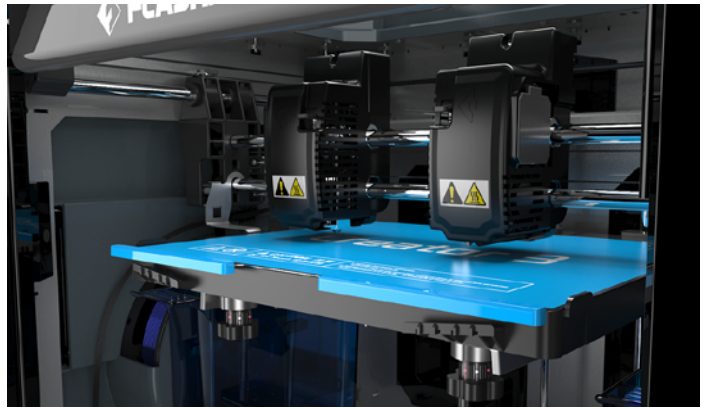


Max. 300°C

High-temperature nozzle

Built-in sensor

No need to adjust the extruder height manually. Detect and compensate the height difference automatically from the platform to the two nozzles.



0.4mm Standard
Steel nozzle
Maximum Temp. 300°C

Support filament:
PLA/ABS/PETG/PA/PC/
ASA/PVA/HIPS



0.4mm Optional
Hardened nozzle
Maximum Temp. 320°C

Support filament:
ABS/PA/PC/ASA/HIPS/
PA-CF/PA-GF/PAHT



0.6mm Optional
Hardened nozzle
Maximum Temp. 320°C

Support filament:
ABS/PA/PC/ASA/HIPS/
PA-CF/PA-GF/PAHT



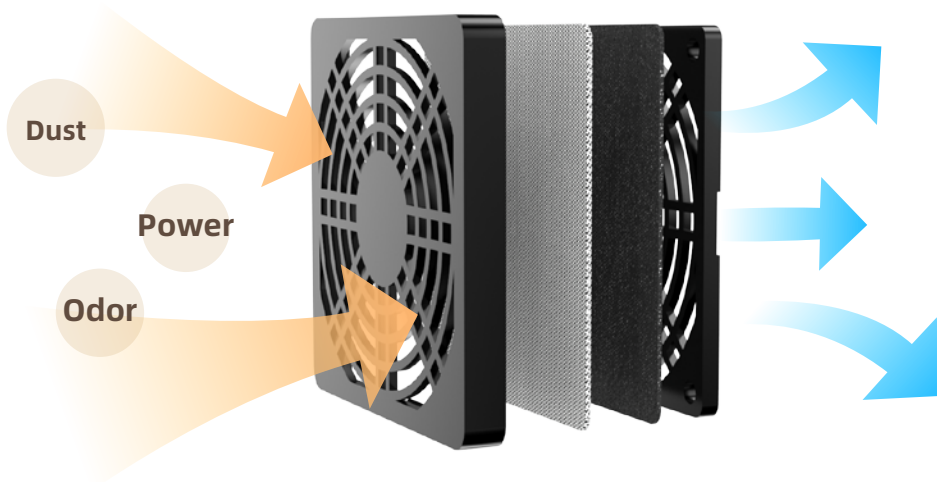
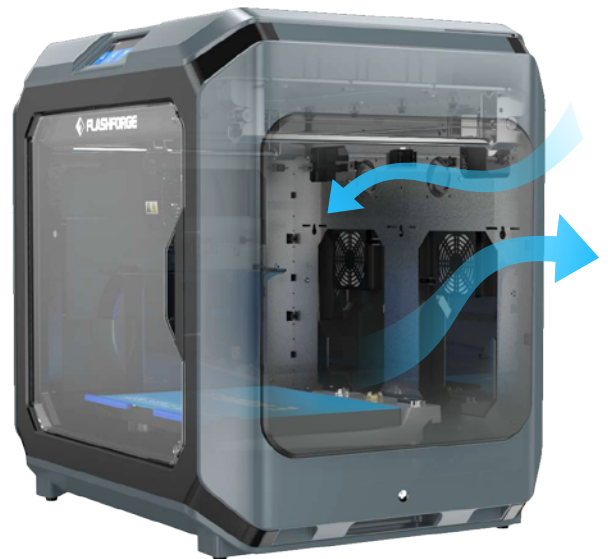
0.8mm Optional
Steel nozzle
Maximum Temp. 300°C

Support filament:
PLA/ABS/PETG/PA/PC/
ASA/PVA/HIPS

Note: For a hardened nozzle, it is necessary to set the extruder temperature 5-15°C higher than a normal one; A hardened filament feeder is suggested to be used together with the hardened nozzle

Four built-in ventilating fans

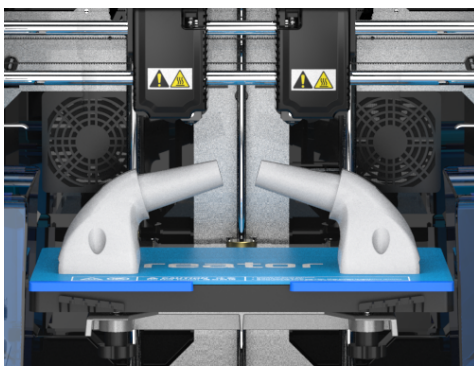
Displacing the internal and external air to adjust the temperature of the chamber to create a better printing environment temperature.



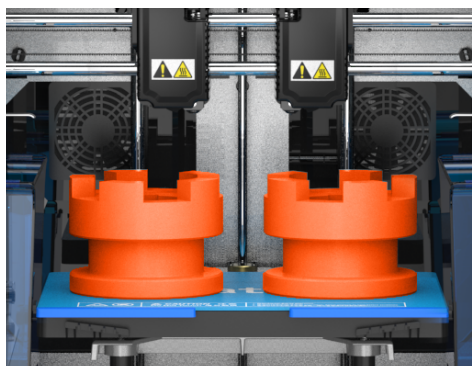
Hepa h13 filter and activated carbon filter cotton can effectively filter fine dust. Filtration efficiency **>95%**. (Hepa filter is optional)

Independent dual-extruder system support multi-printing mode

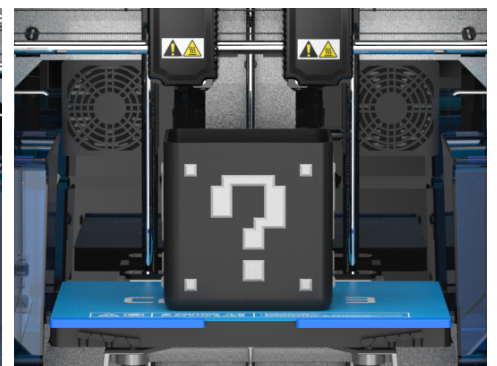
Mirror mode

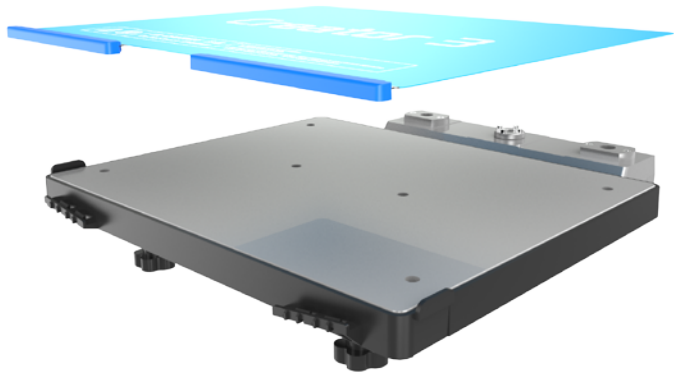


Duplication mode



Two-color mode

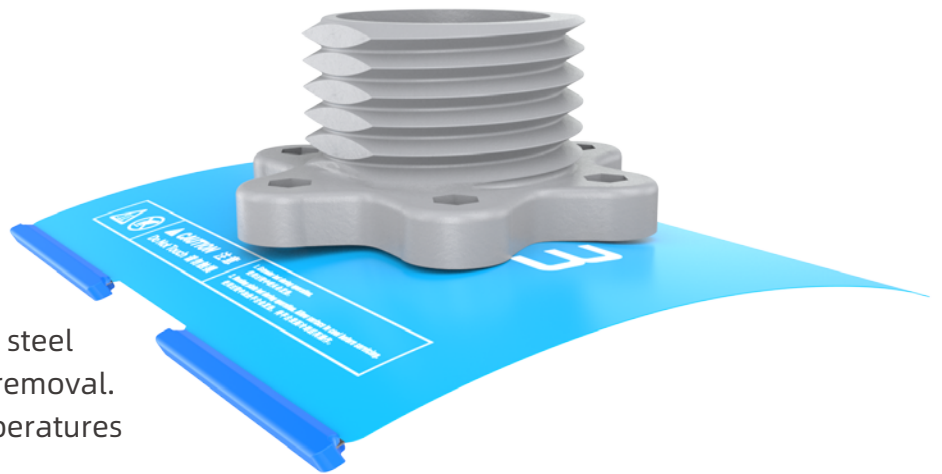




Flexible Steel Plate

**Easy remove/ Easy installation/
Better flatness**

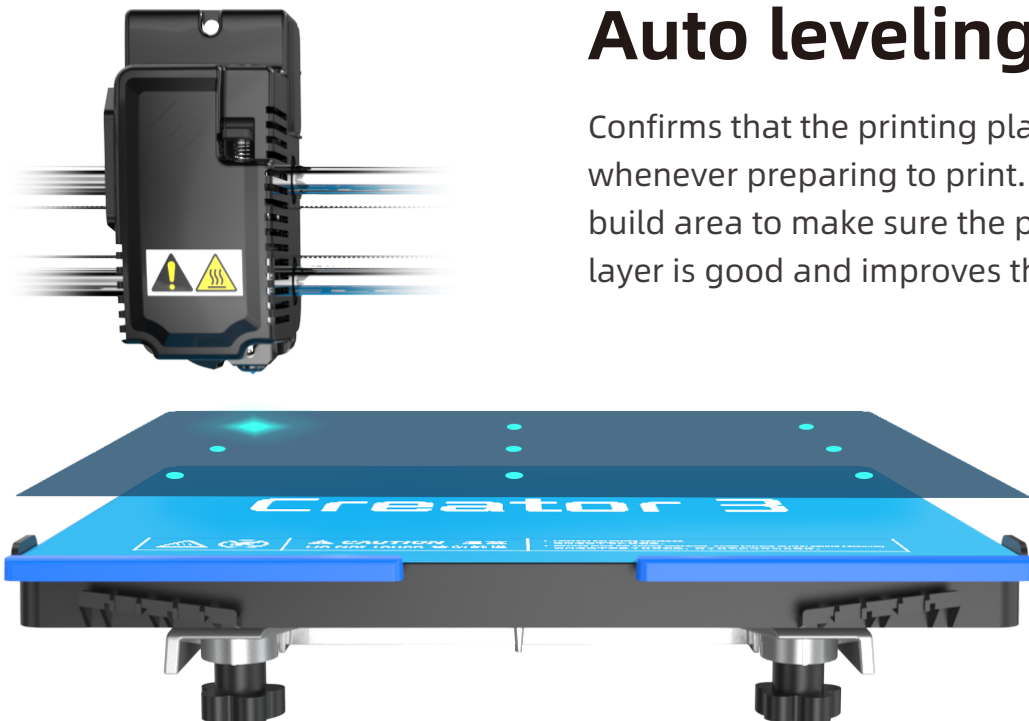
Magnetic suction installation is effortless; the entire CNC aluminum plate support surface provides better flatness.



It is constructed from durable spring steel ensuring flatness and easier model removal. It is able to withstand print bed temperatures of up to 120 degrees Celsius.

Auto leveling

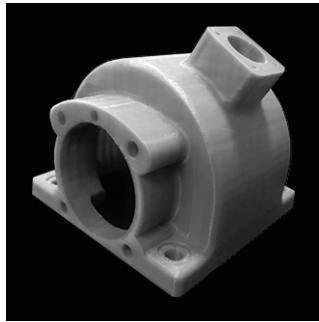
Confirms that the printing platform is level whenever preparing to print. Creating a uniform build area to make sure the print quality of first layer is good and improves the bed adhesion.



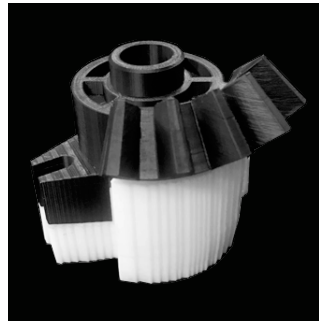
Creator 3 Printed Models



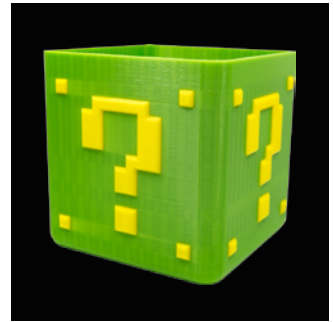
PC



PLA+PVA



ABS+HIPS



PLA+PLA

FILAMENT

ASA

PETG

PC

PA

ABS

PLA

HIPS

PLA Change Color

PLA METAL

PA-CF

PA-GF

Easier printed, better surface

PLA / HS PLA

Industry filament

ABS / ASA / PC

Support filament

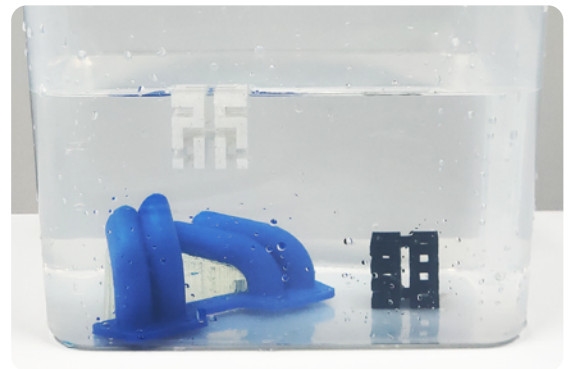
PVA / HIPS

Wear-resistant filament

PA / PP

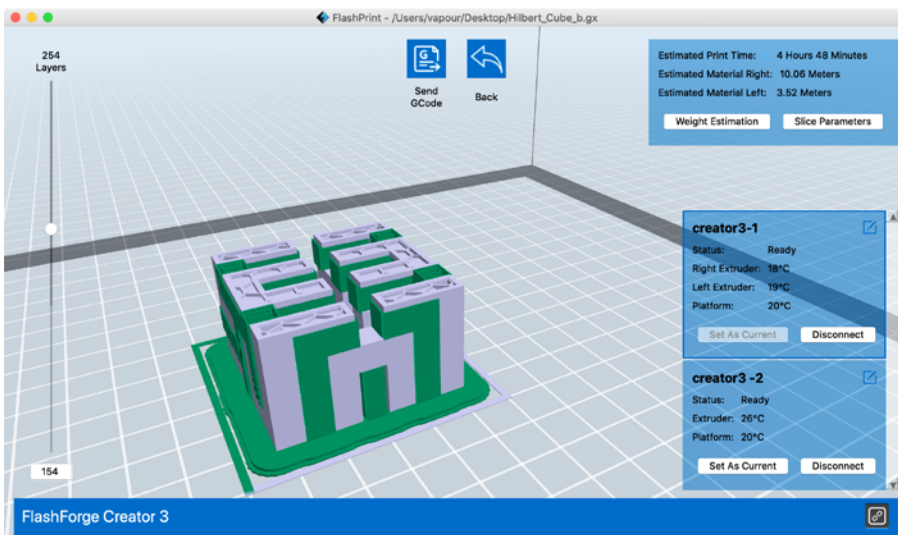
Composite filament

PA-CF / PA-GF



Printing with soluble support structures

Note: Creator3 nozzle is non-high-strength steel. Please replace nozzle timely, when using carbon fiber and glass fiber filament.



FlashPrint Slicing Software

(Multi-device management)
FlashPrint supports the user of various print modes including single and dual material printing.

www.flashforge.com

PARAMETERS

PRINT

Extruder number:	2
Extruder diameter:	0.4mm
Highest set temperature of extruder:	Standard 300°C Max 320°C (Hardened nozzle)
Build Volume:	300*250*200mm
Print Speed:	10-150mm/s
Highest set temperature of platform:	120°C

DEVICE

Printer Volume:	627*485*615mm
Screen:	4.5-inch Touch Screen
Net Weight:	40kg
Input:	100-240 VAC,48-63Hz
Power:	500w
Internal Storage:	8G
Spool:	48mm

COMMUNICATION

Data transmission:	USB stick,Wi-Fi,Ethernet,FlashCloud
Software:	FlashPrint
Output:	GX/G files
Input:	3MF/STL/OBJ/FPP/BMP/PNG/JPG/JPEG files